



Sheets



Latex

Dunlop Classic

(up to 20% natural latex)



Standard density:

2-4cm: 65kg/m³

5cm: 70kg/m³

Perforation:

Standard perforation

20mm/25mm/30mm/40mm (L-PA2065**size*)

50mm (L-PA2070**size*)

- **Option: Jute backing (20mm/25mm/30mm/40mm)**
 - (L-PA2065**size**J) -> "J" Jute backing

Micro perforation

40mm (L-TA2065**size*)

50mm (L-TA2070**size*)

Perfo "7 zone straight wave"

25mm/30mm/40mm (L-PA2065**size**R) -> "R" Straight wave

FR Option: Graphite infused Latex

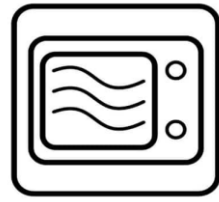
Standard perforation

20mm/25mm/30mm (L-PJ6090*)



Pulse Innergetic

(Up to 50% Natural latex)



Standard density options:

Extra Soft (AA): 55kg/m³ Soft (AB): 65kg/m³

-> Higher density is possible, however a minimum production quantity will apply

Perforation:

Solid (No perforation)

Extra Soft: 30mm/40mm/50mm/60mm (L-VXXXAA*size*)

Soft: 30mm/40mm/50mm/60mm (L-VXXXAB*size*)

Micro perforation

Extra Soft: 30mm/40mm/50mm/60mm (L-TXXXAA*size*)

Soft: 30mm/40mm/50mm/60mm (L-TXXXAB*size*)

7 zone perforation

Extra Soft: 30mm/40mm/50mm/60mm (L-NXXXAA*size*)

Soft: 30mm/40mm/50mm/60mm (L-NXXXAB*size*)

FR Option: Graphite surface coating*

Solid (No perforation)

Extra Soft: 40mm/50mm/60mm

Single Sided FR: (L-VXXXAA*size*MO (single sided)

Double Sided FR: (L-VXXXAA*size*OE (Double sided)

Soft: 40mm/50mm/60mm (L-VXXXAB*size*)

Single Sided FR: (L-VXXXAB*size*MO (single sided)

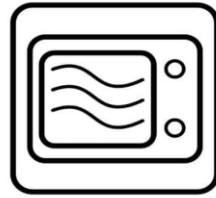
Double Sided FR: (L-VXXXAB*size*OE (Double sided)



* FR option: Not in stock program

Pulse Natural

(100% FSC certified)



Density options:

AB Soft: 65kg/m³; AD* Medium: 75kg/m³; AF* Firm: 85kg/m³

- Minimum production quantities will apply (Growing market segment)

Perforation options:

Solid

Soft: 30mm/40mm/50mm (L-VFXXAB*size*)

Medium: 30mm/40mm/50mm (L-VFXXAD*size*)

Firm: 30mm/40mm/50mm (L-VFXXAF*size*)

Micro perforated

Soft: 30mm/40mm/50mm (L-TFXXAB*size*)

Option Jute backing: Soft 30/40/50mm (L-TFXXAB*size*_J)

Medium: 30mm/40mm/50mm (L-TFXXAD*size*)

Firm: 30mm/40mm/50mm (L-TFXXAF*size*)

7 zone perforation

Soft: 30mm/40mm/50mm (L-NFXXAB*size*)

FR Option: Graphite surface coating*

Solid (No perforation)

Soft: 30mm/40mm/50mm

Single Sided FR: (L-VFXXAB*size*MO (single sided)

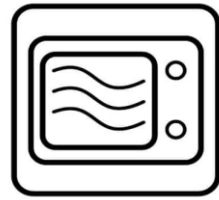
Double Sided FR: (L-VFXXAB*size*OE (Double sided)



* FR option: Not in stock program

Pulse Moreganic

(100% Moreganic certified)



Density options:

AB Soft -> 65kg/m³

-> Higher densities are possible, however minimum production quantities will apply

Perforation options:

Solid

Soft: 40mm/50mm (L-V''TBC''XXAB*size*)

Micro perforated

Soft: 40mm/50mm (L-T''TBC''XXAB*size*)

FR Option: Graphite surface coating*

Solid (No perforation)

Soft: 30mm/40mm/50mm

Single Sided FR: (L-V''TBC''XXAB*size*MO) (single sided)

Double Sided FR: (L-V''TBC''XXAB*size*OE (Double sided)



Specials*

Only available for production runs of 300RM

Standard density options:

Soft (AB): 65kg/m³

Perforation:

Solid (No perforation)

GelPulse/Ocean Blue

Soft: 30mm/40mm/50mm (L-VEXXAB*size*)

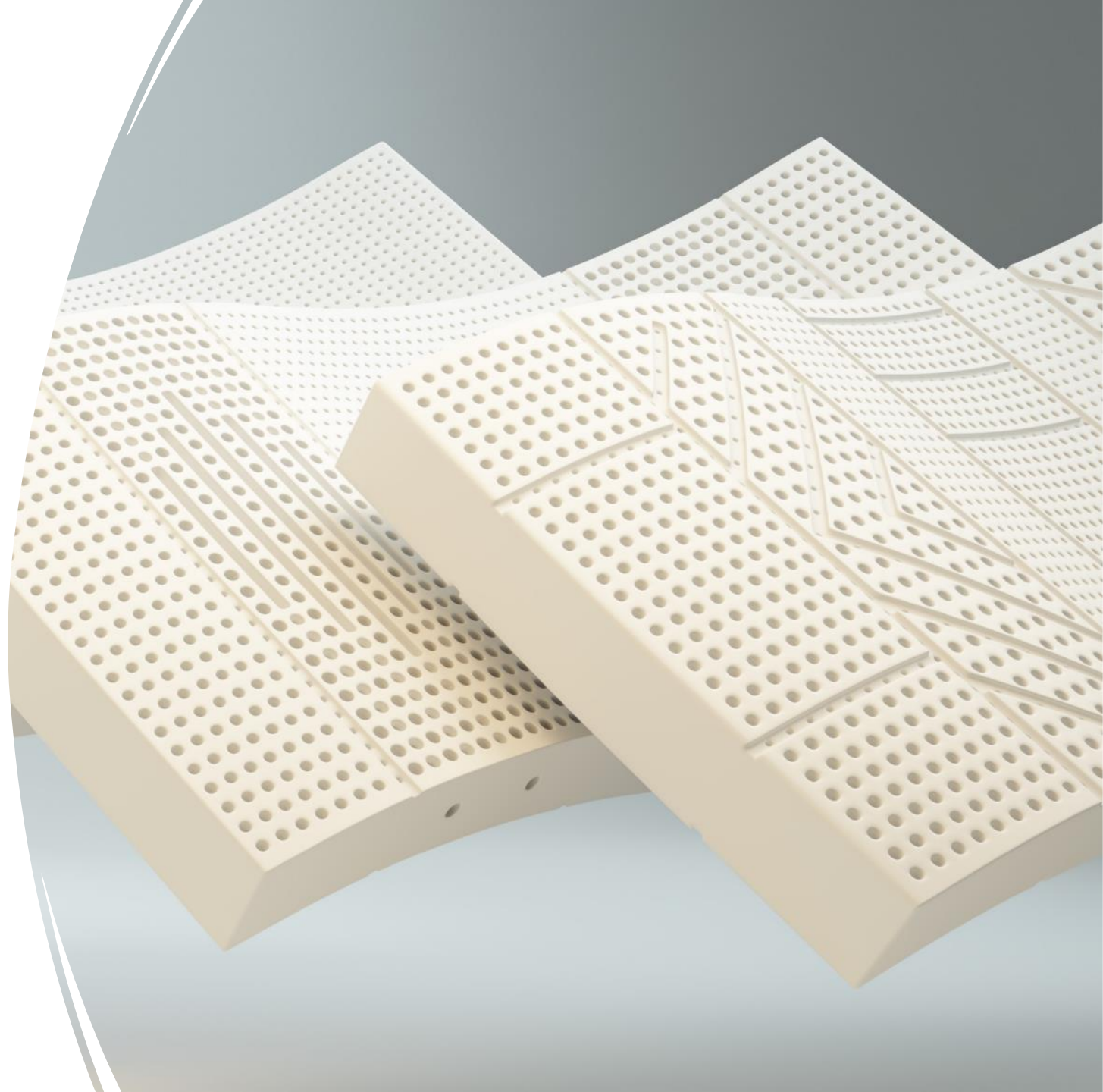
Qgel

Soft: 20mm/30mm/40mm/50mm (L-QGEL*size*)



* Specials: Not in stock program

Blocks





Latex

Classic

- Our “Classic” collection contains up to 20% Natural latex.
- Our standard latex products are made of solid, synthetic latex, enriched with natural latex to improve the mattress’s resilience and progressive support.



Dia Visual 7 Zone

Mould group: B431

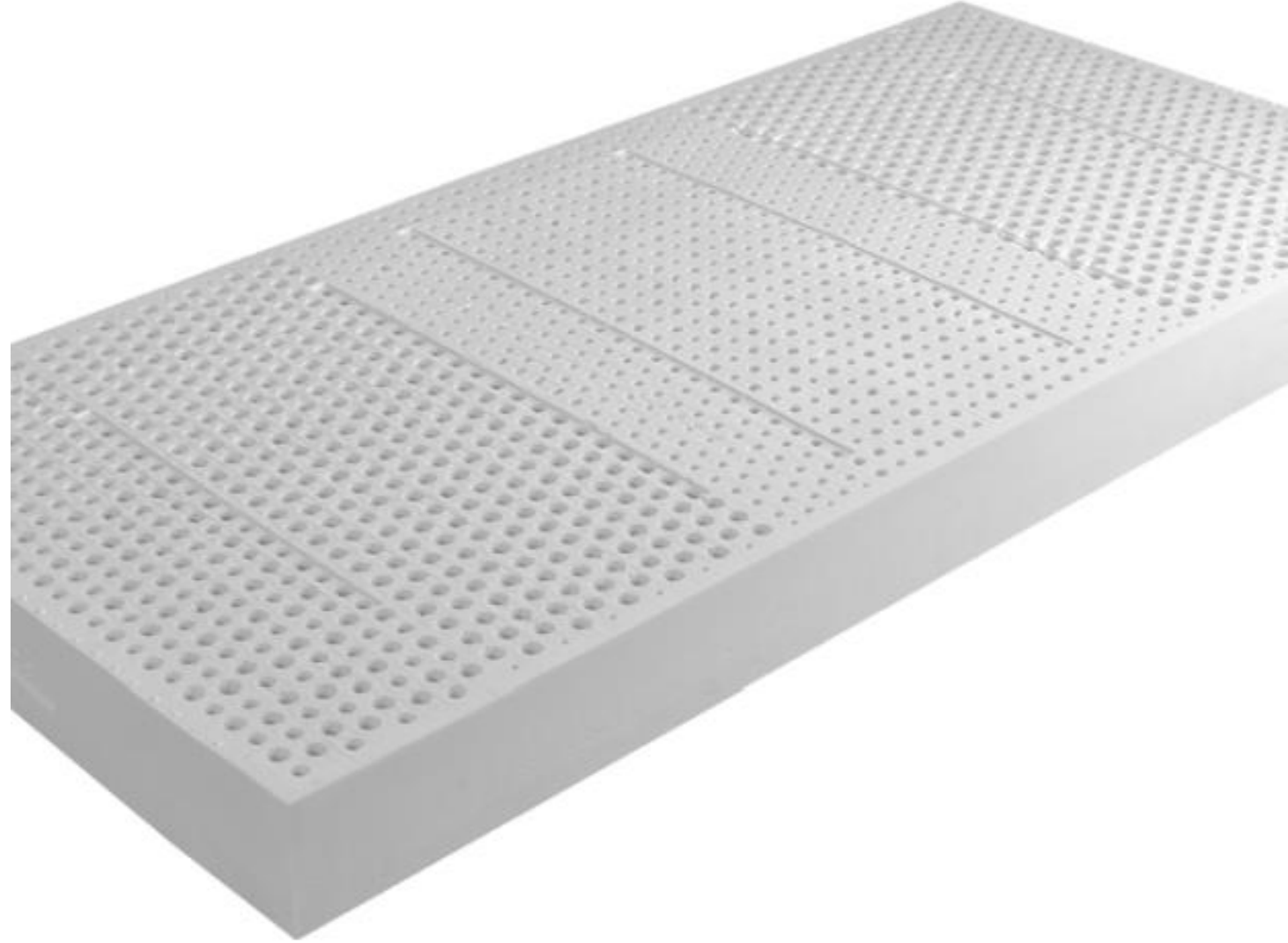
10-12-14-16cm (0-sizes)

10-12-14-16cm (8-sizes)

Soft 55kg (L-BA4311*size*)

Medium 60kg (L-BA4312*size*)

Firm 65kg (L-BA4313*size*)



ADX

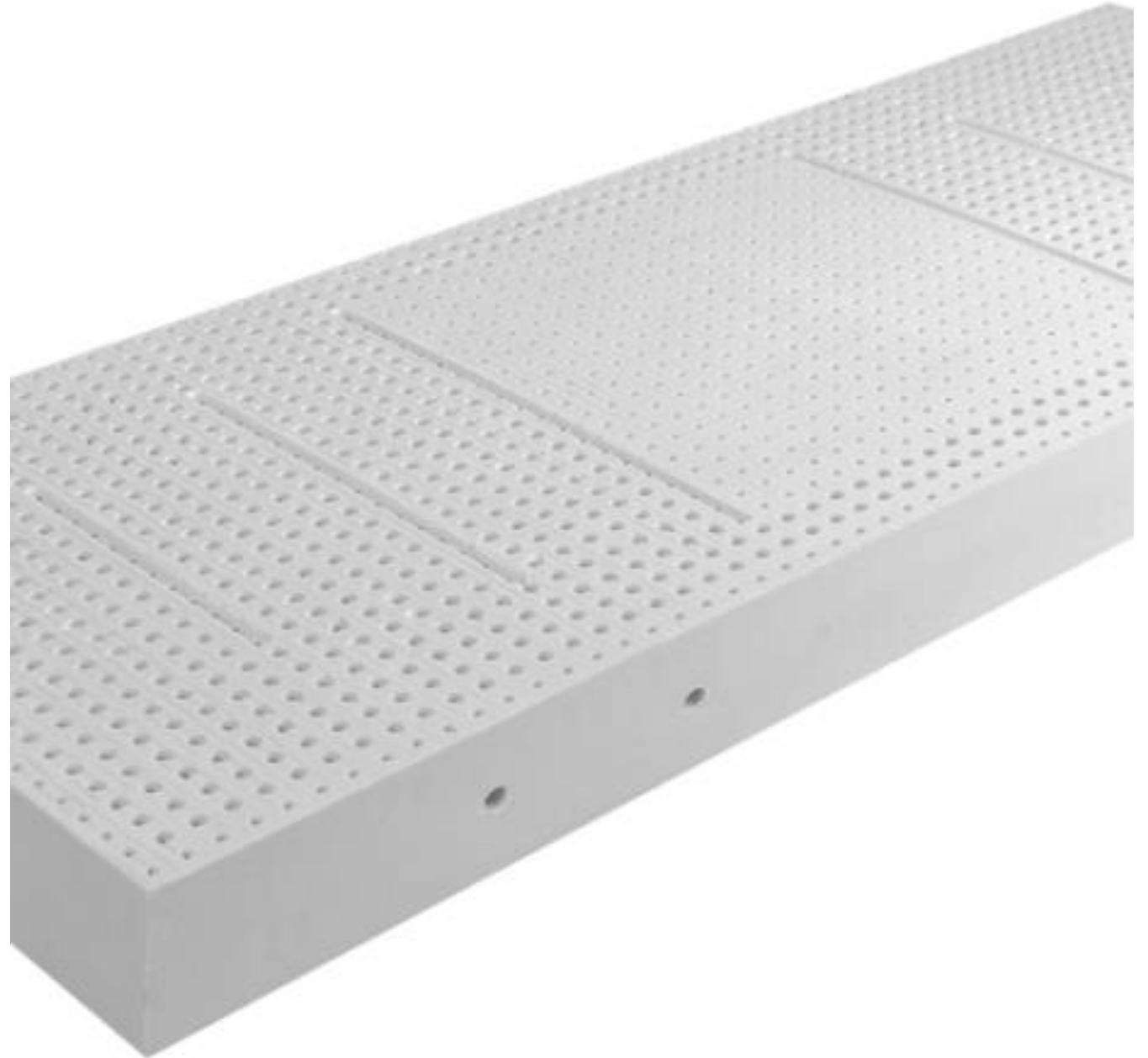
Mould group: X

15cm - 18cm

Soft 60kg (L-XA000S*Size*)

Medium 65kg (L-XA000M*Size*)

Firm 70kg (L-XA000F*Size*)



Dia 7 zone

Mould group: L007

16-18-20cm

Soft 60kg (L-LA0071*size*)

Medium 65kg (L-LA0072*size*)

Firm 70kg (L-LA0073*size*)



100%Natural FSC

- Our “100%Natural Fsc” collection contains 100%Natural latex, FSC certified.



Airstream

Mould group: 9A31

14cm **L-ZF007*** (under evaluation to shift to L-BFA31*)

15cm **L-BFA31***

18cm **L-BFA31***

20cm **L-BFA31***

Soft	67kg	(L-BFA31S*size*)
Medium	72kg	(L-BFA31M*size*)
Firm	77kg	(L-BFA31F*size*)
Extra Firm	82kg	(L-BFA31X*size*)

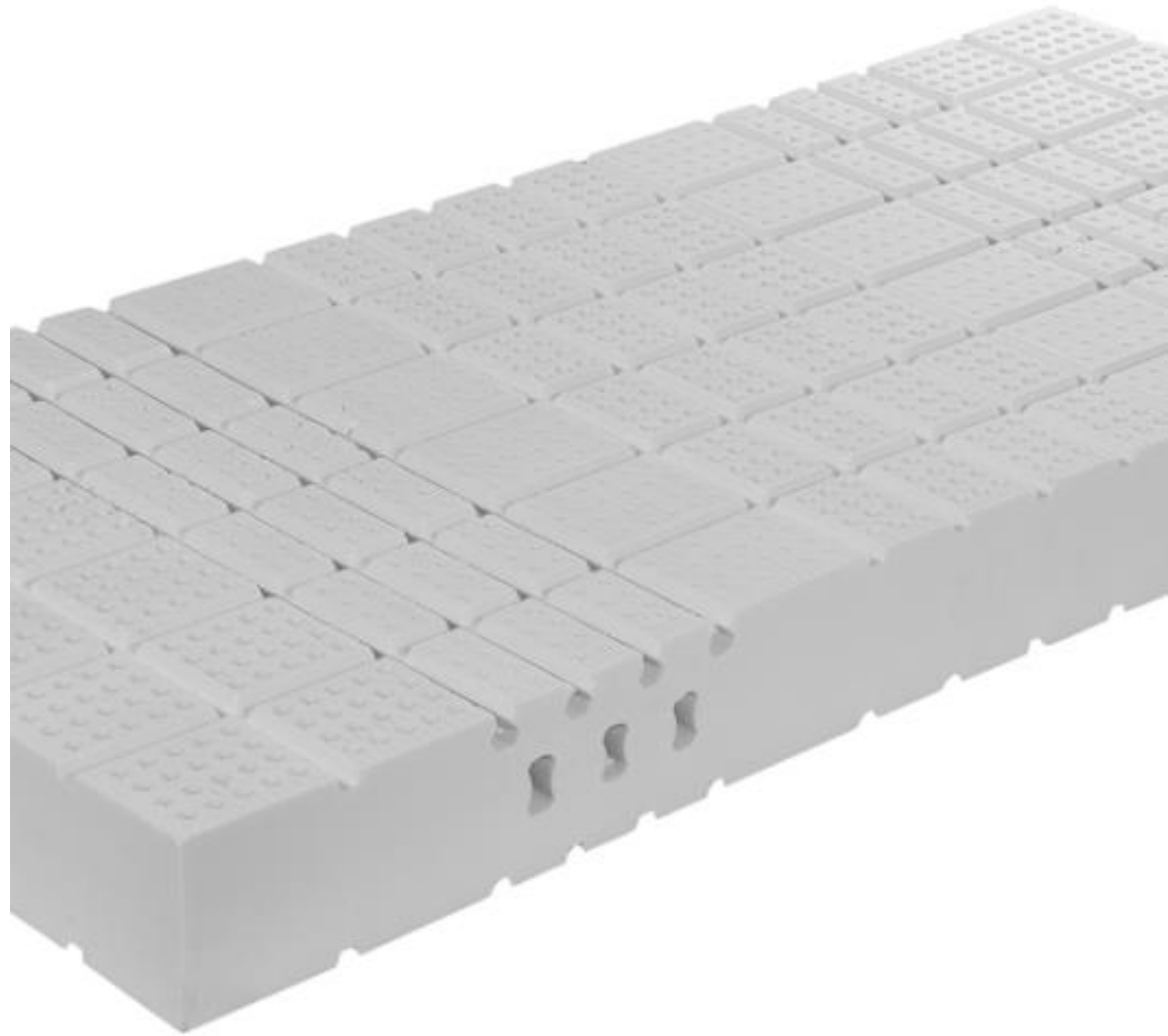


Emerald

Mould group: 9157

18cm

Soft	70kg	(L-BFI57S*size*)
Medium	75kg	(L-BFI57M*size*)
Firm	80kg	(L-BFI57F*size*)



Damia

Mould group: 9A30

15cm – 18cm

Soft	70kg	(L-BFA30S*size*)
Medium	75kg	(L-BFA30M*size*)
Firm	80kg	(L-BFA30F*size*)



Monozone*

Mould Group: 9S

10-12-14-15cm

Soft 70kg/m³ (L-SF000S*size*)

Medium 75kg/m³ (L-SF000M*size*)

Firm 85kg/m³ (L-SF000F*size*)

